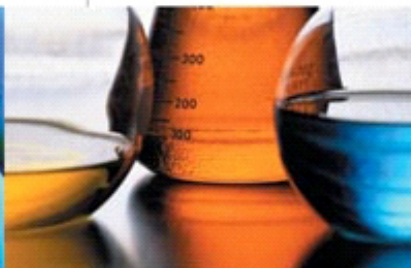




Canadian Food
Inspection Agency

Agence canadienne
d'inspection des aliments

Canadian Food Inspection Agency



Science and regulation...

working together for Canadians

Movement Restrictions for Articles Regulated Due to the Presence of the Emerald Ash Borer

Allison Barr, A/ Ontario EAB Specialist

EAB Management Workshop
March 2014

Canada 

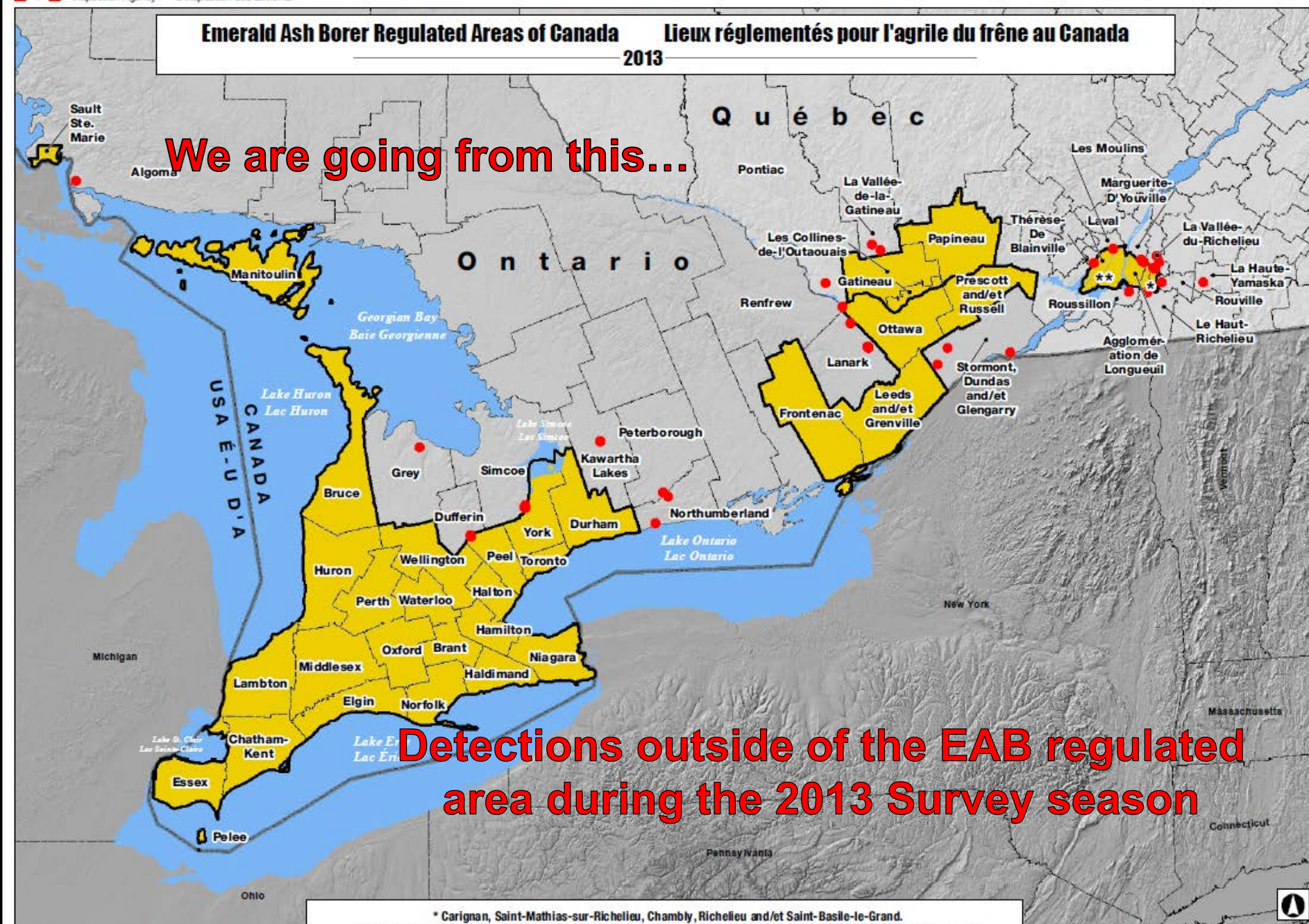
Emerald Ash Borer Regulated Areas of Canada

2013

Lieux réglementés pour l'agrile du frêne au Canada

We are going from this...

Detections outside of the EAB regulated area during the 2013 Survey season



● Positive site | Site positif (2013)

Areas regulated | Lieux réglementés

* Carignan, Saint-Mathias-sur-Richelieu, Chambly, Richelieu and/et Saint-Basile-le-Grand.

** Montréal, Baie-d'Urfé, Beaconsfield, Côte-Saint-Luc, Dollard-des-Ormeaux, Dorval, Hampstead, Kirkland, L'Île-Dorval, Montréal-Est, Montréal-Ouest, Mont-Royal, Pointe-Claire, Sainte-Anne-de-Belleuve, Senneville and/et Westmount.

**EMERALD ASH BORER REGULATED AREAS OF CANADA
PLANNED FOR IMPLEMENTATION ON APRIL 1, 2014**

**LIEUX
PLANIFIÉS**

To this...



To be regulated April 2014

Why is the CFIA moving in this direction?

- Although detection tools have improved over the years, **EAB remains cryptic** and difficult to detect at low population densities.
- **Detections are typically made 3 to 4 years** after establishment in an area, which implies that EAB has spread beyond the current detected boundary.
- The USDA and the CFIA are withdrawing intensive resource usage from the infested areas and **focusing surveillance and management efforts at the perimeter** in order to better monitor the spread of the pest.



Why is the CFIA moving in this direction?

- CFIA will **oversee product movement** out the regulated area, provide **electronic communications materials** and **support research on EAB management tools**.
- **CFIA's responsibility** in the management of EAB is to use its **legal authority** in developing and maintaining programs aimed at slowing the artificial (i.e., human-assisted) spread of EAB to areas in which there is a high degree of confidence that EAB is absent. This includes **surveillance, regulation and enforcement, investment in research, and communications and outreach activities**



Where are we at?

- As of March 2013, the presence of EAB had been confirmed in 27 Ontario counties and 7 areas in the province of Quebec.
- During the 2013 survey season, it was detected in an additional 10 counties/districts in Ontario and 10 municipalités regionales de comté (MRC) in Quebec.



New approach to regulatory action

- In April 2013, **EAB was added to Schedule II** (Restricted movement within Canada) of the *Plant Protection Regulations*.
- This means that EAB will no longer be regulated by a Ministerial Order but will be regulated by the *Plant Protection Regulations*.
- **This allows the CFIA to regulate a newly detected area during a survey season very quickly**
- The CFIA will continue to **choose regulatory boundaries such as counties or districts** but for now, in the northern areas of the Ontario and Quebec, the CFIA will regulate at the township level.



What is regulated?

➤ The CFIA regulates the movement of:

- Ash trees and any part thereof including fresh leaves, branches (with or without leaves)
- Ash sawn wood
- Ash logs and ash pulpwood
- Ash bark, ash wood chips and ash bark chips
- Ash nursery stock
- Any other ash wood product that could harbour or sustain the life cycle of EAB
- Wood packaging materials with an ash component including pallets, pallet stock, wood packaging, and dunnage
- Firewood of all species

As Canada's National Plant Protection Organization, the CFIA has a mandate to protect Canada's forests in un-infested areas, as well as market access-related aspects in demonstrating that its pest-mitigation programs are effective at producing pest-free wood products.

EAB Approved Facility Compliance Program (EABAFCP)

- The CFIA **assists sawmills and firewood vendors** through local compliance programs to mitigate the risk of spread while maintaining current markets for industry.
- This compliance program is based on policy directive **D-03-08**
- QSM-07: Assists facilities in the **development of their quality manual** for this compliance program

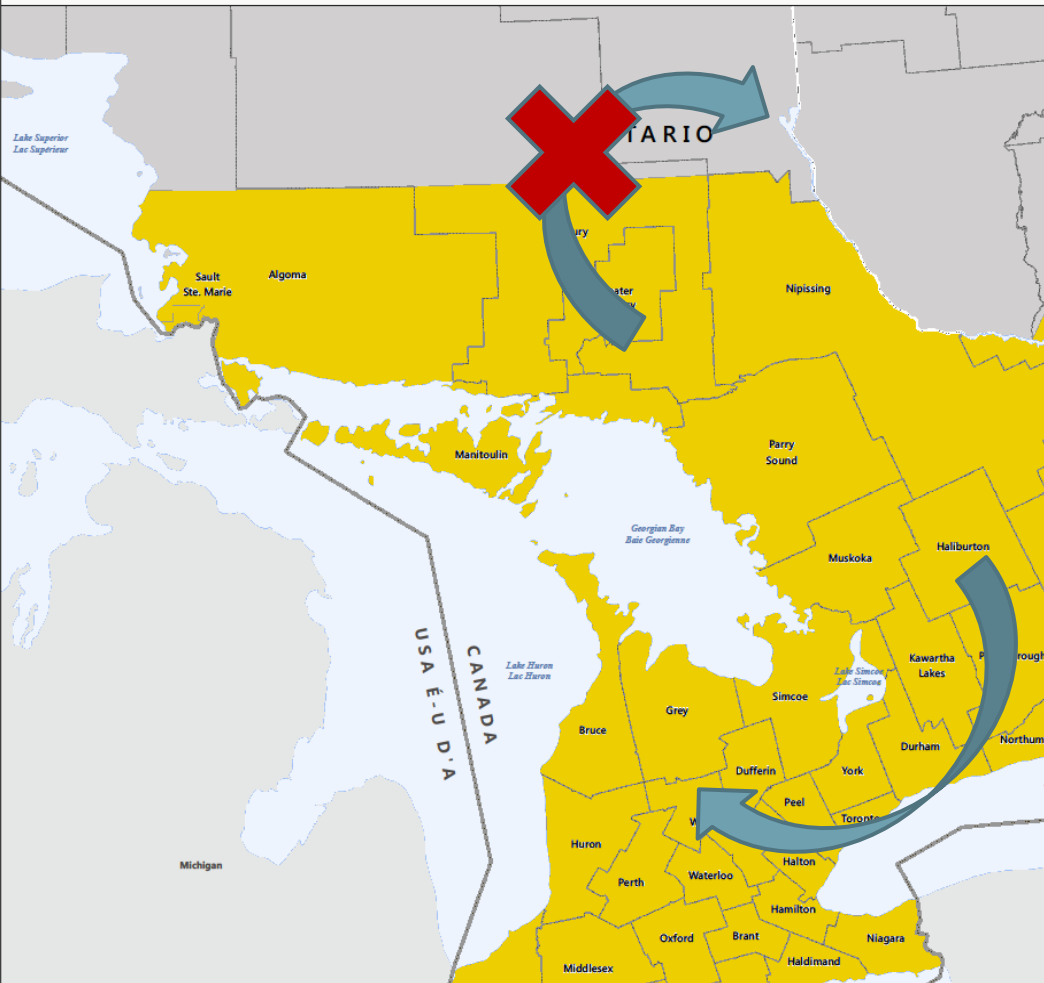


These important documents can be found at the CFIA website under “Emerald Ash Borer”

EMERALD ASH BORER REGULATED AREAS OF CANADA
PLANNED FOR IMPLEMENTATION ON APRIL 1, 2014

LIEUX
PLANIF

Plant restrictions

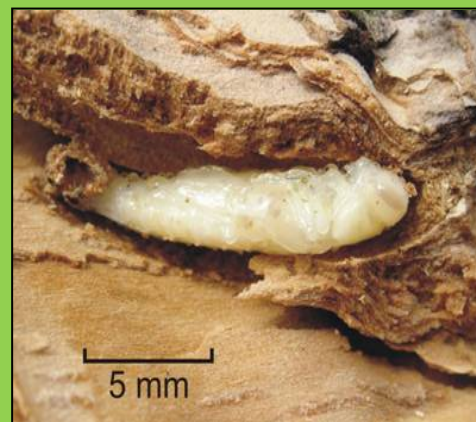


Regulated articles **can move within** a regulated area but **can not exit** the area without written permission from the CFIA

However...

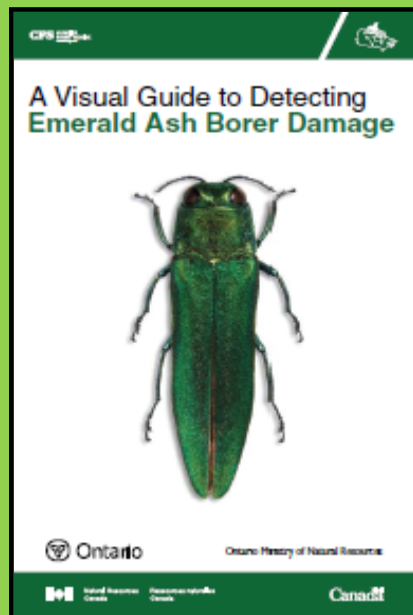
The CFIA fully supports and encourages stakeholder engagement and implementation of by-laws as well as outreach communications to encourage the public to:

- **NOT MOVE REGULATED PRODUCTS** within the regulated area and
- **BUY and BURN** firewood **LOCALLY**



CFIA Communication and outreach support

CFIA outreach tools are available for distribution in limited supply:



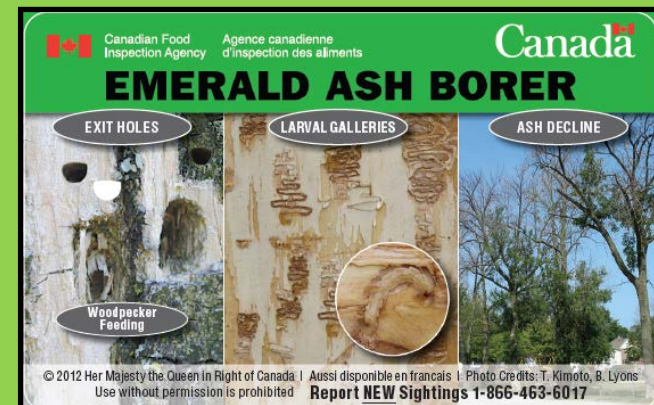
'EAB Visual Detection Guide'



EAB 'Key Tags'



EAB 'Hockey Card'



EAB 'Credit Card'

Also available on the CFIA website under 'Emerald Ash Borer':



A single piece
of firewood
can **DESTROY**
millions of trees.



Moving firewood, even just a few kilometres away,
can spread invasive insects and diseases to our forests.

DON'T MOVE FIREWOOD

Buy it locally. Burn it on site. Never bring it back home.

For more information call 1-800-442-2342 or visit www.inspection.gc.ca

 Canada

‘Don’t Move Firewood’
Publication

 **Pest Alert**
Emerald Ash Borer
(*Agrilus planipennis*)



Adult
Adult Size
8.5–14mm



Larva
David Cooper, MU



S-shaped Emergence Hole
CFA Windsor



Tree Decline
James W. Smith, USA



Ash Leaf
Ken Marchant, CFA



S-shaped Tunnels
CFA Windsor

The Emerald Ash Borer (EAB) is a highly destructive insect pest of ash trees. Native to eastern Asia, this pest was first discovered in Canada and the U.S. in 2002. The EAB has killed millions of ash trees in Southwestern Ontario, Michigan and surrounding states, and poses a major economic and environmental threat to urban and forested areas in both countries. The EAB attacks and kills all species of ash (except Mountain ash which is not a true ash).

Signs of infestation

Tree decline, including:

- thinning crown
- diminished density of leaves
- evidence of adult beetle feeding on leaves
- long shoots growing from the trunk or branches
- vertical cracks in the trunk
- small D-shaped emergence holes
- S-shaped tunnels under the bark filled with fine sawdust

How does the EAB spread?

While the EAB can fly up to several kilometres, another significant factor contributing to its spread is the movement of firewood, nursery stock, trees, logs, lumber, wood with bark attached and wood or bark chips.

Contact the CFIA

If you see suspected signs of infestation on your ash trees or if you plan on moving firewood (e.g., when camping, relocating or managing a woodlot), contact the Canadian Food Inspection Agency (CFIA) for more information.

Help Protect Canada's Trees and Forests.

Canada 1-866-463-6017
Monday to Friday, 8:00 a.m. to 4:00 p.m.
www.inspection.gc.ca/pests

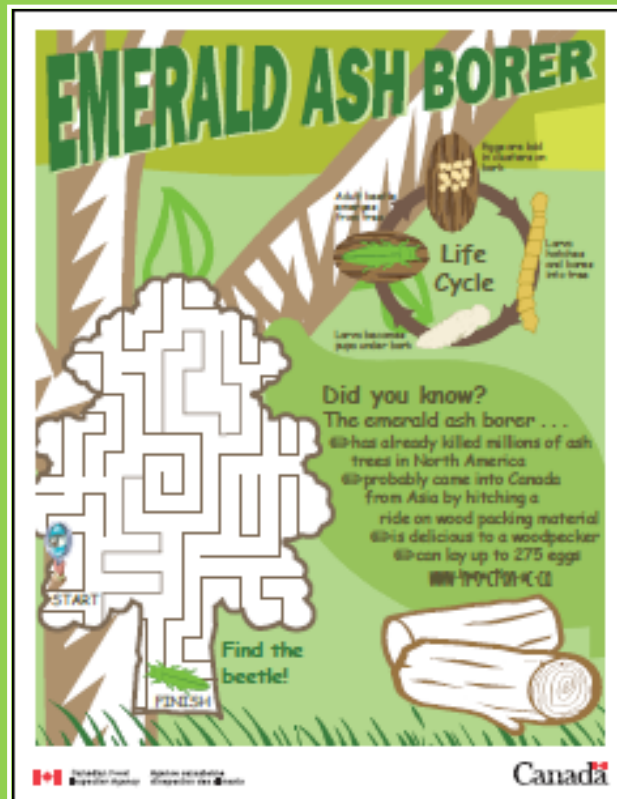
PO75-0811



‘EAB Pest Alert’

www.inspection.gc.ca

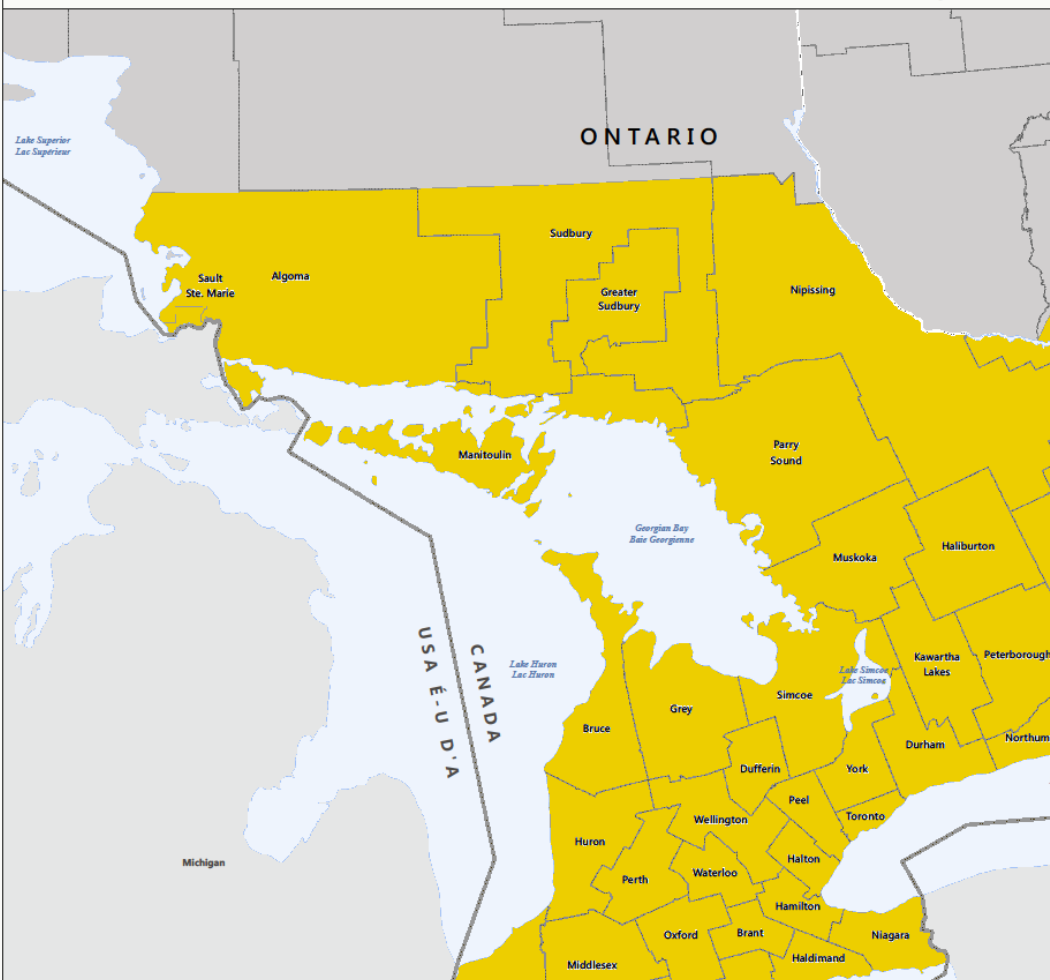
Also available on the CFIA website under 'Emerald Ash Borer':



Children's 'EAB Activity Sheet'

www.inspection.gc.ca

EMERALD ASH BORER REGULATED AREAS OF CANADA | **LIEUX**
PLANNED FOR IMPLEMENTATION ON APRIL 1, 2014 | **PLANIF**



To be regulated April 2014

2014 EAB Survey Plans

- CFIA will continue to conduct detection surveys outside of regulated areas across Canada in 2014
- In Ontario, survey strategies will include both trapping and visual surveys located within:
 - Urban centres
 - Holiday destinations: provincial parks, seasonal campgrounds
 - Rest stops along major transportation corridors
 - New subdivisions and other areas with recently planted ash nursery stock
 - Areas identified by the public and reported as suspects through public inquiries/call-outs
 - Areas with ash decline



Photo: Hugh Evans, CFS

2014 EAB Survey Plans (Cont'd...)

- To maximize survey efforts taking place outside of the regulated area, CFIA would like to co-ordinate survey activities taking place outside of the newly regulated area with both municipal and provincial partners.
- Please contact Julie Holmes, A/ Area Survey Biologist for Ontario:
 - To co-ordinate survey efforts if you are located outside of the newly regulated area and plan to conduct EAB trapping in 2014
 - If you would like to obtain a copy of CFIA's 2014 EAB Survey Protocol
 - If you would like a sample of an EAB adult and larva to assist you with your detection surveys



2014 EAB Survey Outreach Program

- The CFIA's 2014 EAB Outreach Campaign will provide our municipal partners with an opportunity to learn how the CFIA conducts trapping activities by accompanying CFIA staff during our EAB detection surveys
- Survey activities at target sites will be conducted during the following periods:
 - Trap Deployment: May 25 – June 10
 - Trap Check: July 10 - 20
 - Trap Collection: August 25 – September 5
- Please contact Julia Ruhl or Stephen Clare (Regional Program Officers for northern Ontario), by late May if you are interested in taking part in this opportunity.



Area and Regional CFIA Contact Information and Support

Acting Ontario Area EAB Specialist:

Allison.Barr@inspection.gc.ca

Regional Program Officers, NE Region:

Julia.Ruhl@inspection.gc.ca

Stephen.Clare@inspection.gc.ca

Acting Ontario Area Survey Biologist:

Julie.Holmes@inspection.gc.ca

Ontario Area Communications Manager:

JoAnne.Ford@inspection.gc.ca

General inquiries: eab_agrile@inspection.gc.ca



Questions?

Canada